

AWA OILFIELD SERVICES, INC.

PRODUCTS LINE CARD



PRODUCTS

UPSTREAM / OILFIELD

- STUFFING BOXES
- BOPS
- ROD ROTATORS
- POLISHED ROD CLAMPS
- NEEDLE VALVES
- MOLDED TANKS
- BACK PRESSURE REGULATORS
- CHOKES
- BUTTERFLY VALVES
- BALL VALVES
- TEFLON TAPE
- HAMMER UNIONS
- OILFIELD LUBRICANTS
- PIPE FITTINGS & FLANGES

MIDSTREAM / PIPELINE

- API 6D CHECK VALVES
- PIPELINE CLOSURES
- PIG SIGNALLERS
- BUTTERFLY VALVES
- BALL VALVES
- LIQUID LEVEL INDICATION PRODUCT
- ACTUATED VALVE PACKAGES
- PIPE FITTINGS & FLANGES

DOWNSTREAM / REFINERY

- BALL VALVES
- GATE, GLOBE, & CHECK VALVES
- FIRE PROTECTION VALVES
- TOV BUTTERFLY VALVES
- DUAL PLATE CHECK VALVES
- CHAINWHEEL OPERATORS
- ACTUATED VALVE PACKAGES
- INFLATABLE SEATED BUTTERFLY VALVES
- CRYOGENIC VALVES
- PIPE FITTINGS & FLANGES
- HIGH PERFORMANCE BUTTERFLY VALVES



1290 Highway 181 South
Karnes City, TX 78118

PHONE (830) 780-4411
FAX (830) 780-4413

www.awaoil.com

Authorized Repair Center for

NOV Completion & Production Solutions

follow us





PROVIDING SURFACE EQUIPMENT AND FIELD REPAIR SERVICES

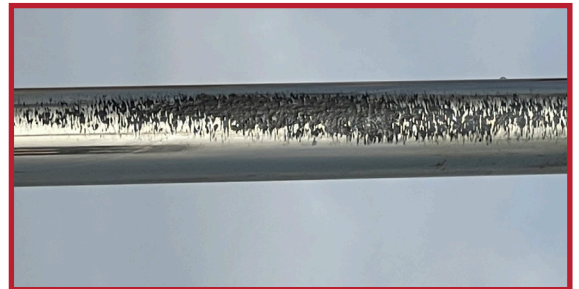
ABOUT AWA OILFIELD SERVICES

- Certified to meet the ever changing safety challenges of our STX customers
- Fully Insured
- Members of ISNET and DISA
- AWA Oilfield Service Techs wear appropriate PPE, are SafeLand trained, and H2S Certified
- In Shop and Field Repair Service (after verifying that our current ISNET and DISA Certifications meet your MSA requirements)
- Testing to NOV IOM Procedures up to 15k PSI chart
- Recording delivered with every unit
- Stocking or Customer Stock after refurbishment
- Safely verifies future performance capabilities while recycling used products back into service, including LOE

THE IMPORTANCE OF REFURBISHMENT

- Lowers Cost of Ownership
- Increased Life of Equipment
- Helps the operator understand particular conditions of their well
- SAFETY

PROBLEM SOLVED!



One of our stuffing box end users was having soft internal packing wear issues and sent us this picture. They were having to change their stuffing box packing in less than 3 days after initial replacement. Our team at AWAOS asked for more information and this picture shows a damaged polished rod which was causing the packing to fail and the stuffing box to leak prematurely. The solution was simple, replace the polished rod, and the packing issue disappeared. The damaged and cut polished rod was causing the packing to be cut and filed away, and the stuffing box would not perform properly. This was not a terribly complex problem to fix, but our experts at AWAOS knew the right questions to ask to get to the bottom of the problem and help save the end user money and downtime!





REFURBISHMENT SERVICES



When our customers call to refurbish their equipment, we pick it up at the well site, and then begin the process of refurbishment. One of the first steps is to visually inspect the equipment for possible damage to any of the internal components. In the illustrations to the left, the BOP's in question showed signs of possible chemical attack.



During this refurbishment process, we always try to re-use subcomponents before replacing to keep the cost of service down. We alerted the customer of this chemical attack on both the BOP rams as well as the internal surface of the BOP. We urged them to allow us to replace the BOP body itself in one instance, and in the other picture advised the operator to replace the BOP rams and refurbish the rest of the BOP as normal. Our expertise allows us to help guide the customer to refurbish versus replace equipment, but more importantly alert them of any service conditions that might be causing damage to their equipment.

We provide oilfield equipment refurbishment services at AWA Oilfield Services, and follow standard safety and PPE protocols. We refurbish all of our equipment using factory IOM's as our guide. We offer 24/7 service and will do work on and offsite to ensure quick turnaround to our customers. Time is critical, so we pick up, inspect, clean, refurbish, paint, and test every unit prior to delivery back into the field. Our services help lower the cost of ownership, increase life of the existing equipment, and in many instances, help the operator understand the particular conditions of their well. The pictures here show our inspection, refurbishment and test capabilities as well as a glimpse as to what the finished product looks like.



INSPECT | CLEAN | REFURBISH | TEST

AWA OILFIELD SERVICES, INC.

CAN ALSO SUPPLY THE FOLLOWING PRODUCTS

BOLTED SLEEVE COUPLINGS
BRASS CHECK VALVES
BULL PLUGS
BUTTERFLY VALVES
(ALL STYLES AND CONFIGURATIONS)
CAM AND GROOVE FITTINGS
COMPANION FLANGES
CS & SS PIPE FITTINGS AND NIPPLES
EXPANSION JOINTS
FLOATING BALL VALVES
GAUGES
IN-LINE CHECK VALVES
INSTRUMENT FITTINGS
INSTRUMENT TUBING
INSTRUMENTATION VALVES
INTERCHANGEABLE HAMMER UNIONS
KNIFE GATE VALVES

LEAD FREE VALVES AND FITTINGS
LUBRICANTS
PIPELINE CLOSURES
PLUG VALVES
PUP JOINTS
RING GASKETS
ROD BOXES
SANITARY VALVES AND FITTINGS
SLAB GATE VALVES
STEAM TRAPS
SWAGE NIPPLES
SWING CHECK VALVES
SWIVEL JOINTS
TEE STRAINERS
THERMOMETERS
TRUNNION BALL VALVES
TUBING NIPPLES
Y-STRAINERS



AWA OILFIELD SERVICES
1290 Highway 181 South
Karnes City, TX 78118

PHONE (830) 780-4411
FAX (830) 780-4413

AWA OILFIELD SERVICES MAIN OFFICE
4319 Pinemont
Houston, TX 77018

PHONE (713) 692-5566
TOLL FREE (800) 733-4781
FAX (713) 692-6021

Call or E-Mail Your inquiry today
sales@awaoil.com

